

Spannsatz Locking Device

Die empfohlenen Bearbeitungstoleranzen für die Druckflächen sind:

Welle h 8 Nabe H 8

Recommended machining tolerances:

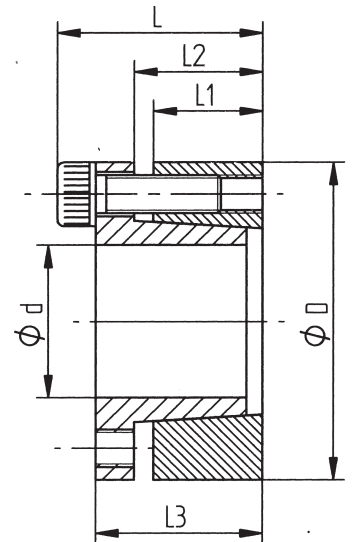
Shaft h 8 Hub H 8



BESTELLBEISPIEL: ORDER CODE:

Bei einer Welle mit $\varnothing 30$ mm und max. Drehmoment 660 Nm
For a shaft with $d=30$ mm and a transmissible torque value
lower than or equal to 660 Nm

KBS 13 - 30 x 55



| Innen/ Außen Ø Inner/ Outer Ø | Dreh- moment Torque | Abmessungen Dimensions | | | | Flächenpressung an Surface pressure on | | Spannschrauben Screws | | | Gewicht Mass |
|--|---------------------------|---------------------------|-----|-----|-----|---|--|--------------------------|-----------------|----------|-----------------|
| | | L | L 1 | L 2 | L 3 | Welle Shaft Pw N/mm ² | Nabe Hub Pn N/mm ² | n St. | Size DIN 912 | TA Nm | |
| d x D | T Nm | mm | mm | mm | mm | | | | | | |
| 18x47 | 310 | 34 | 17 | 22 | 28 | 314 | 120 | 5 | M6x20 | 14 | 0.26 |
| 19x47 | 330 | 34 | 17 | 22 | 28 | 300 | 120 | 5 | M6x20 | 14 | 0.25 |
| 20x47 | 380 | 34 | 17 | 22 | 28 | 295 | 125 | 5 | M6x20 | 14 | 0.25 |
| 22x47 | 410 | 34 | 17 | 22 | 28 | 270 | 125 | 5 | M6x20 | 14 | 0.25 |
| 24x50 | 440 | 34 | 17 | 22 | 28 | 243 | 120 | 6 | M6x20 | 14 | 0.26 |
| 25x50 | 560 | 34 | 17 | 22 | 28 | 285 | 140 | 6 | M6x20 | 14 | 0.26 |
| 28x55 | 630 | 34 | 17 | 22 | 28 | 255 | 130 | 6 | M6x20 | 14 | 0.29 |
| 30x55 | 660 | 34 | 17 | 22 | 28 | 235 | 130 | 6 | M6x20 | 14 | 0.30 |
| 32x60 | 960 | 34 | 17 | 22 | 28 | 295 | 155 | 8 | M6x20 | 14 | 0.33 |
| 35x60 | 1050 | 34 | 17 | 22 | 28 | 270 | 155 | 8 | M6x20 | 14 | 0.34 |
| 38x65 | 1140 | 34 | 17 | 22 | 28 | 250 | 145 | 8 | M6x20 | 14 | 0.35 |
| 40x65 | 1200 | 34 | 17 | 22 | 28 | 235 | 145 | 8 | M6x21 | 14 | 0.35 |
| 45x75 | 2180 | 41 | 20 | 25 | 33 | 290 | 170 | 7 | M8x25 | 35 | 0.60 |
| 50x80 | 2430 | 41 | 20 | 25 | 33 | 260 | 160 | 7 | M8x25 | 35 | 0.65 |
| 55x85 | 3070 | 41 | 20 | 25 | 33 | 270 | 175 | 8 | M8x25 | 35 | 0.70 |
| 60x90 | 3350 | 41 | 20 | 25 | 33 | 245 | 165 | 8 | M8x25 | 35 | 0.75 |
| 65x95 | 4080 | 41 | 20 | 25 | 33 | 255 | 175 | 9 | M8x25 | 35 | 0.80 |
| 70x110 | 6280 | 50 | 24 | 30 | 40 | 280 | 180 | 8 | M10x30 | 70 | 1.55 |
| 75x115 | 6680 | 50 | 24 | 30 | 40 | 260 | 170 | 8 | M10x30 | 70 | 1.65 |
| 80x120 | 7130 | 50 | 24 | 30 | 40 | 250 | 160 | 8 | M10x30 | 70 | 1.70 |
| 85x125 | 8480 | 50 | 24 | 30 | 40 | 260 | 180 | 9 | M10x30 | 70 | 1.85 |
| 90x130 | 9080 | 50 | 24 | 30 | 40 | 250 | 170 | 9 | M10x30 | 70 | 1.90 |
| 95x135 | 10580 | 50 | 24 | 30 | 40 | 260 | 180 | 10 | M10x30 | 70 | 2.00 |
| 100x145 | 13380 | 56 | 26 | 32 | 44 | 270 | 190 | 8 | M12x35 | 125 | 2.65 |
| 110x155 | 14580 | 56 | 26 | 32 | 44 | 240 | 180 | 8 | M12x35 | 125 | 2.83 |
| 120x165 | 17880 | 56 | 26 | 32 | 44 | 250 | 180 | 9 | M12x35 | 125 | 3.10 |
| 130x180 | 29980 | 64 | 34 | 40 | 52 | 240 | 170 | 12 | M12x35 | 125 | 4.60 |
| 140x190 | 26980 | 68 | 34 | 40 | 54 | 210 | 150 | 9 | M14x40 | 190 | 4.92 |
| 150x200 | 32980 | 68 | 34 | 40 | 54 | 230 | 170 | 10 | M14x40 | 190 | 5.10 |
| 160x210 | 37980 | 68 | 34 | 40 | 54 | 230 | 170 | 11 | M14x40 | 190 | 5.45 |
| 170x225 | 44980 | 78 | 44 | 50 | 64 | 180 | 130 | 12 | M14x40 | 190 | 7.70 |
| 180x235 | 46980 | 78 | 44 | 50 | 64 | 170 | 130 | 12 | M14x40 | 190 | 8.00 |